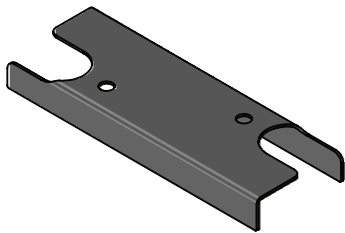


M6 8 Nm
M8 16 Nm

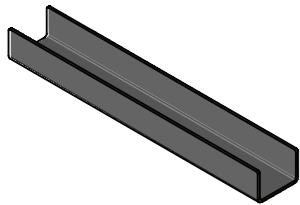
GB	Ladder retainer assembly
FR	Instructions de montage
ES	Instrucciones de montaje
DE	Montageanleitung
NL	Montage-instructies
IT	Istruzioni assemblaggio
PT	Instruções de montagem
RU	инструкции по монтажу



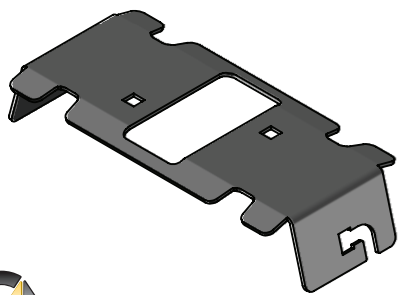
(x4)



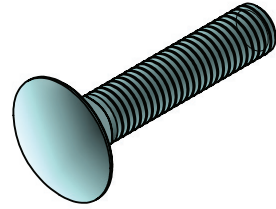
(x2)



(x4)



(x2)



M8x40 (x4)



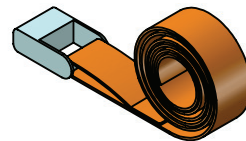
Ø8x16 (x8)



M8 (x8)



(x8)



(x2)



M6 8 Nm
M8 16 Nm